

# WESTVIEW PLAZA I

1850 SW Fountainview Blvd • Port St. Lucie • FL 34986

## FRONTAGE ON I-95



### PROPERTY FEATURES

- Premier Class “A” Professional Office Building
- Prime Location in Master-Planned St. Lucie West
- **Fiber Equipped Smart Building** Provides the Fastest Data Speeds with Unmatched Reliability
- Signage Visible from I-95 • Over 55,000 Cars Daily
- Immediate Access • Located Adjacent to Exit Ramp
- Building Security System • 24/7 Key Card Access
- **Lease Rates Starting at \$14.00 PSF NNN**

### SPACE AVAILABLE

- Suite 201 – 4,939 sq. ft. (Minimum Divisible 2,250 SF)
- Suite 206 – 1,050 sq. ft.
- Suite 207 – 2,903 sq. ft.



Thomas R. Gibson, Broker  
561.776.9300  
800.781.0201  
trg@assetspecialists.com



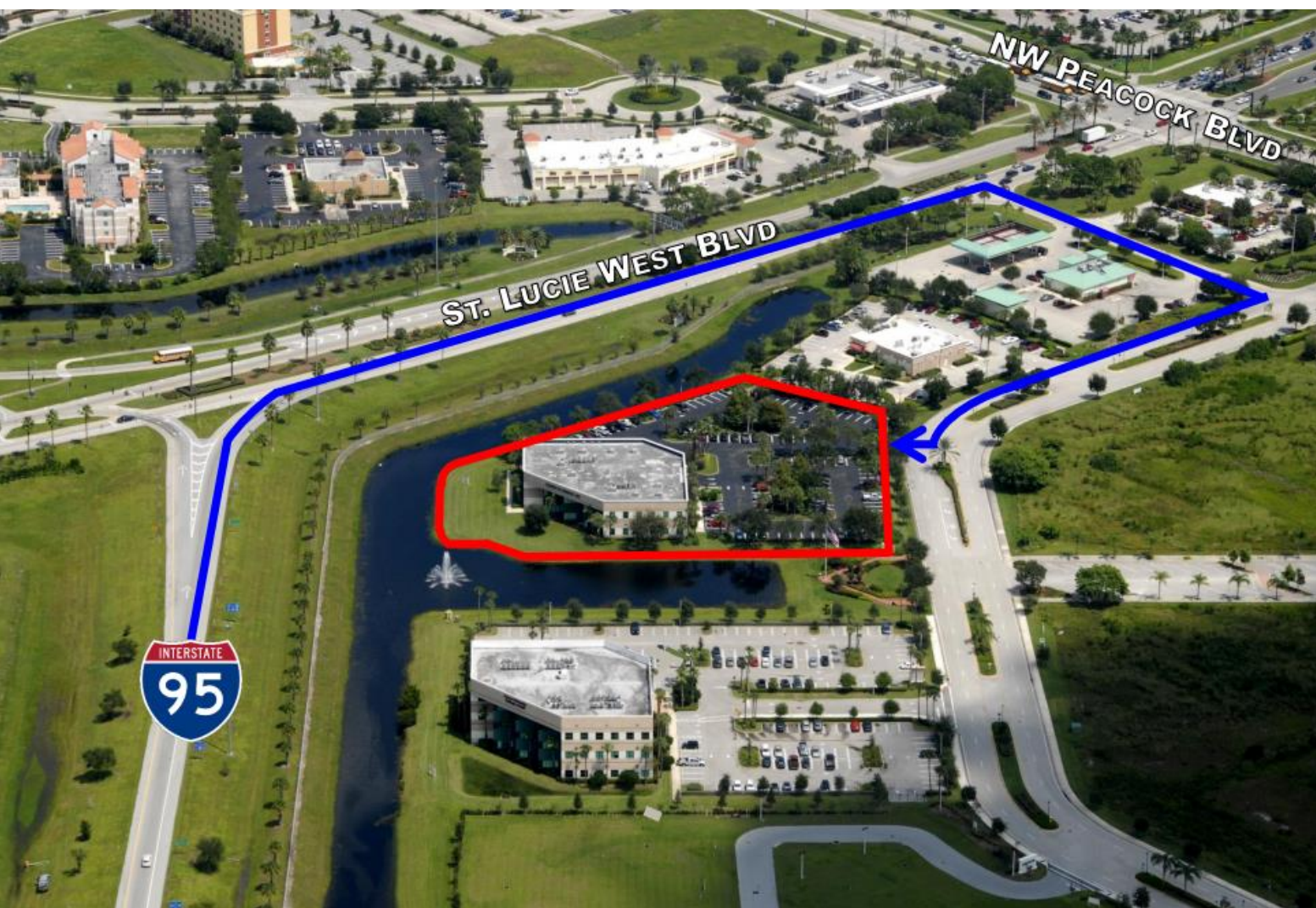
ASSET  
SPECIALISTS, INC.

ASSET SPECIALISTS, INC.  
3710 Buckeye St.  
Suite 100  
Palm Beach Gardens, FL 33404



# LOCATION INFORMATION

**Direct Exposure to Over 55,000 Commuters Per Day**



**Westview Plaza is situated just off of I-95 in the master-planned community of St. Lucie West.**

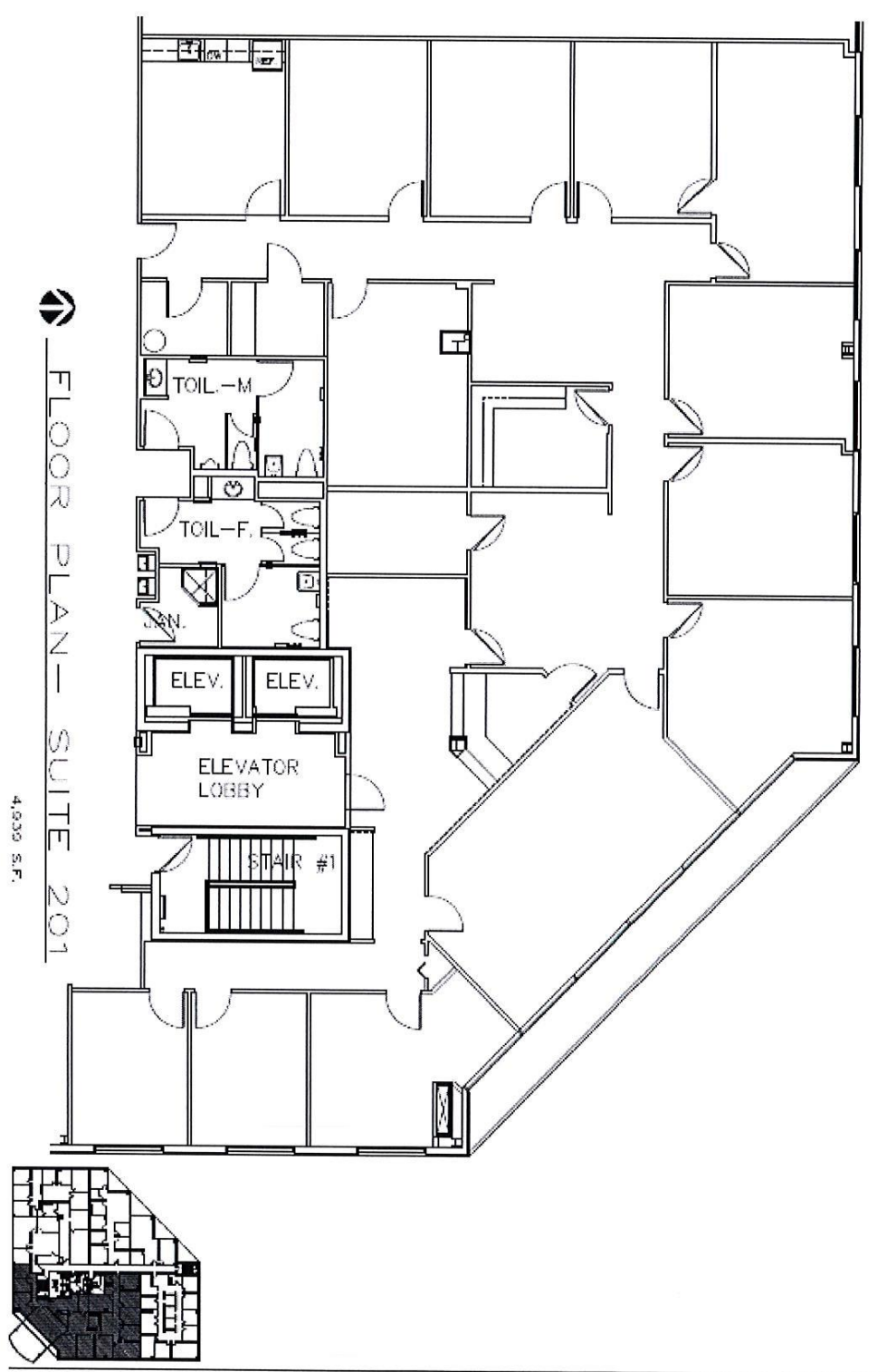
**This location offers excellent client access and superior visibility to over 55,000 commuters per day, making Westview Plaza a one of a kind opportunity not to be missed!**

**Contact Asset Specialists at 561.776.9300 today for more information on Westview Plaza.**



# FLOOR PLAN

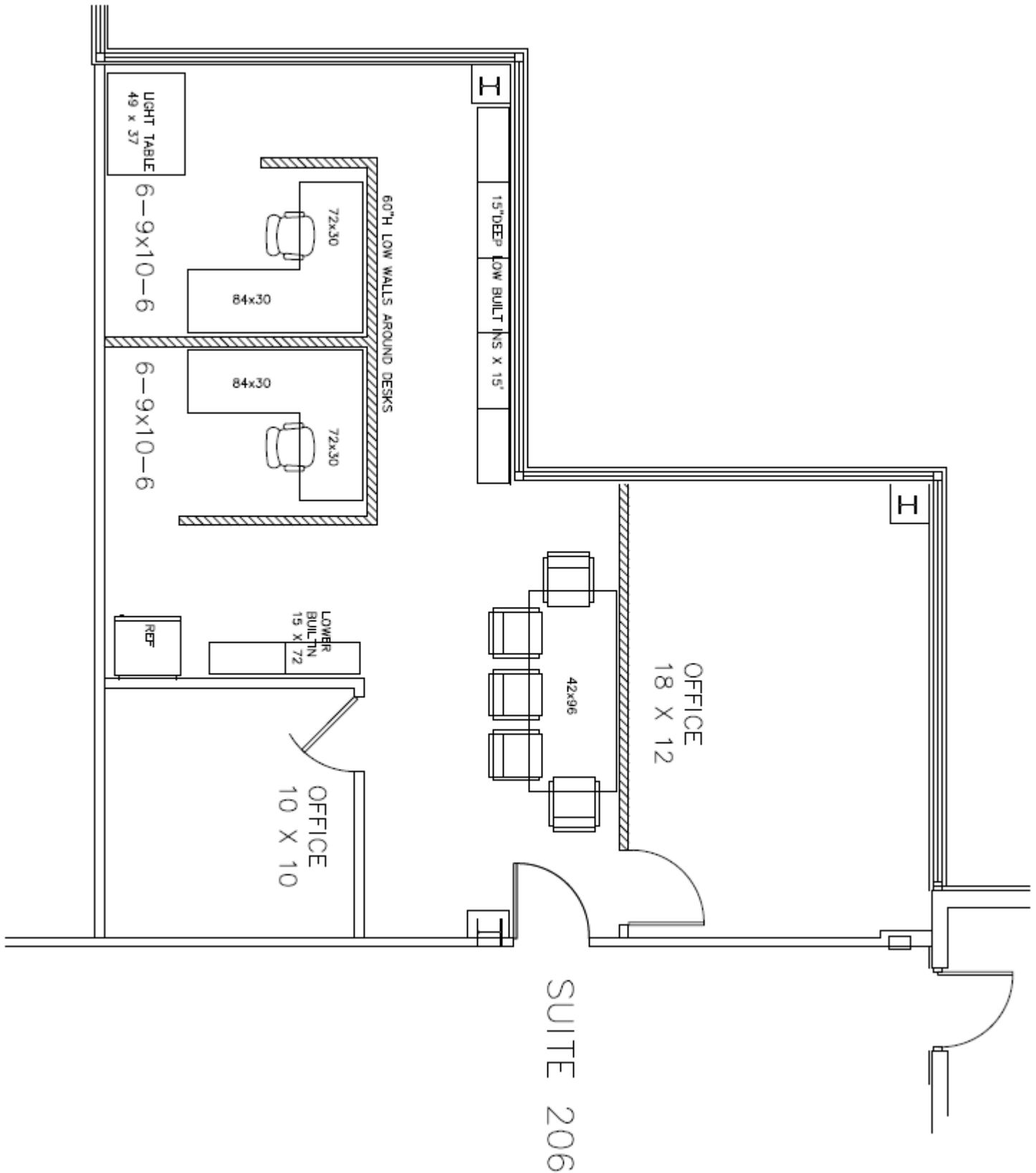
Suite 201 • 4,939 Square Feet





# FLOOR PLAN

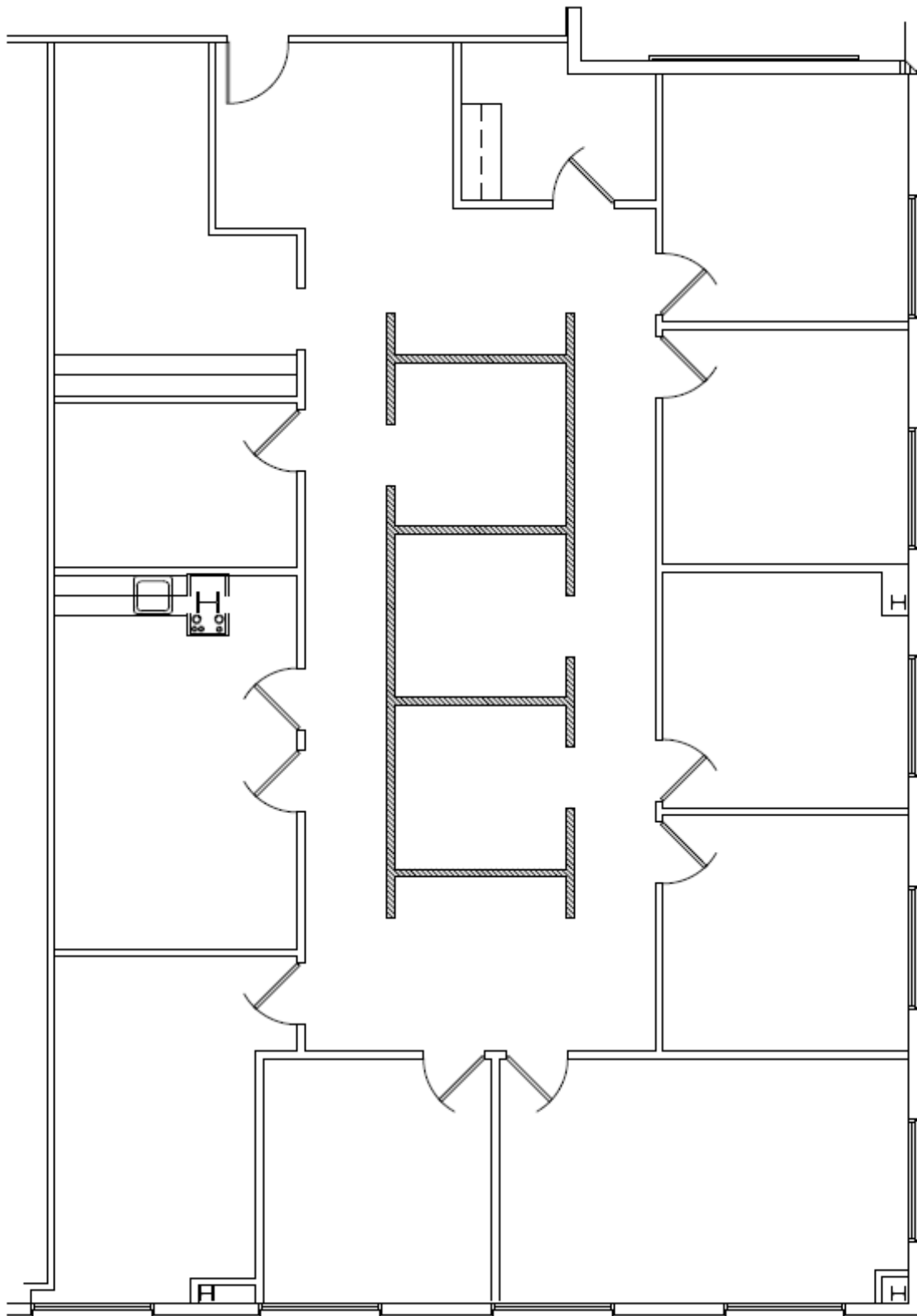
Suite 206 • 1,050 Square Feet





# FLOOR PLAN

Suite 207 • 2,903 Square Feet







## COMMERCIAL REAL ESTATE SERVICES



BRINGING THE  
**RIGHT PEOPLE TOGETHER**  
AT THE **RIGHT TIME.**

EXCEPTIONALLY  
**NETWORKED.**  
A **UNIQUE ADVANTAGE.**



**A S S E T**  
SPECIALISTS, INC.

3710 Buckeye Street • Suite 100 • Palm Beach Gardens • FL • 33410  
Thomas R. Gibson, Broker • 561.776.9300 • [trg@assetspecialists.com](mailto:trg@assetspecialists.com)  
[www.AssetSpecialists.com](http://www.AssetSpecialists.com)